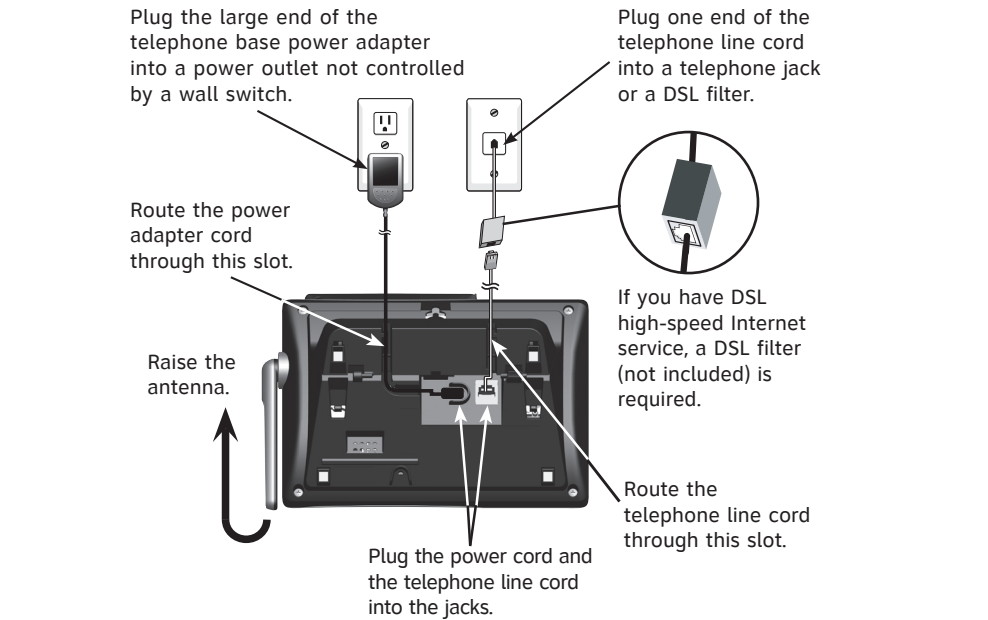


This quick start guide provides you with basic instructions only. For more complete instructions, refer to your Abridged user’s manual provided in the package, or see the online Complete user’s manual at [www.telephones.att.com/manuals](http://www.telephones.att.com/manuals).

#### Telephone base installation

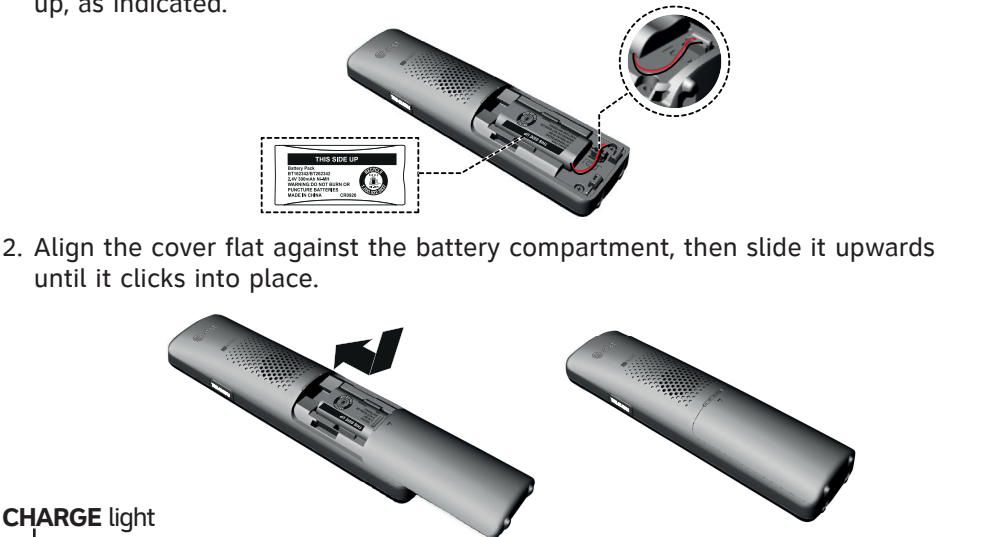


**Caution:** Use only the power adapter(s) provided with this product. To obtain a replacement, visit our website at [www.telephones.att.com](http://www.telephones.att.com) or call **1 (800) 222-3111**. In Canada, dial **1 (866) 288-4268**.

#### Battery installation

Install the battery, as shown below. Charge your handset(s) before initial use. The battery is fully charged after ten hours of continuous charging.

1. Plug the battery connector securely into the socket inside the handset battery compartment. Insert the supplied battery with the label **THIS SIDE UP** facing up, as indicated.



#### CHARGE light



**Caution:** Use only the supplied rechargeable battery or replacement battery (model BT183342).

### Quick reference guide - handset

#### CHARGE light

On when the handset is charging in the telephone base or charger.

#### ▼CID/VOLUME

- Press ▼CID to show caller ID log when the handset is not in use.
- Press to scroll down while in menus.
- Press to decrease the listening volume when on a call.

#### REDIAL/PAUSE

- Press repeatedly to view the last ten numbers dialed.
- While entering numbers, press and hold to insert a dialing pause.

#### PHONE/FLASH

Press to make or answer a call.

#### 1

Press and hold to set or dial your voicemail number.

#### TONE\*/a>A

- Press to switch to tone dialing temporarily during a call if you have pulse service.
- While entering names, press to change the next letter to upper or lower case.

#### /SPEAKER

Press to make or answer a call using the speakerphone.

#### Handset side view



#### PUSH TO TALK

Press to initiate a one-to-one or one-to-group broadcast.

Press and hold to broadcast to a group of system devices.

#### ▲DIR/VOLUME

- Press ▲DIR to show directory entries when the handset is not in use.
- Press to scroll up while in menus.
- Press to increase the listening volume when on a call.

#### MENU/SELECT

- When the handset is not in use, press to show the menu.
- While in the menu, press to select an item or save an entry or setting.

#### /OFF/CANCEL

- During a call, press to hang up.
- While in a menu, press to cancel an operation, back up to the previous menu, or exit the menu display; or press and hold this button to exit to idle mode.

#### QUIET# (pound key)

Press and hold to enter the QUIET mode setting screen, or to deactivate QUIET mode.

#### EQ

During an outside call, intercom call, message or announcement playback, press to change the audio quality to best suit your hearing.

#### MUTE/DELETE

- During a call, press to mute the microphone.
- Press to delete digit or character.

### Quick reference guide - telephone base

#### CANCEL

- While in a menu, press to cancel an operation, back up to the previous menu or exit the menu display.
- Press and hold to go back to idle mode.

#### ▼CID

- Press to display the caller ID log when the phone is not in use.
- Press to scroll down while in menus and lists.

#### MENU/SELECT

- When the telephone base is not in use, press to show the menu.
- While in the menu, press to confirm or save an entry or setting.

#### ▲DIR

- Press to display the directory when the phone is not in use.
- Press to scroll up while in menus and lists.

#### FLASH

During a call, press to answer an incoming call when you receive a call waiting alert.

#### 1

Press and hold to set or dial your voicemail number.

#### /HANDSET LOCATOR

While the phone is idle, press to page all handsets.

#### REDIAL/PAUSE

- Press repeatedly to view the last 10 numbers dialed.
- While entering numbers, press and hold to insert a dialing pause.

#### ▼/VOLUME/▲

- While in idle mode, press to adjust the base ringer volume.
- When on a call, press to adjust the listening volume.



#### •/RECORD

Press to record a memo or an announcement.

#### ◀/REPEAT

- During playback, press to repeat the playing message.
- During playback, press twice to play the previous message.

#### ▶/SKIP

Press to skip a message.

#### ▶/PLAY/STOP

Press to start or stop message playback.

#### X/DELETE

- While reviewing the caller ID log, the directory or the redial memory, press to delete an individual entry.
- Press to delete digit or character.

#### Φ/ANS ON/OFF

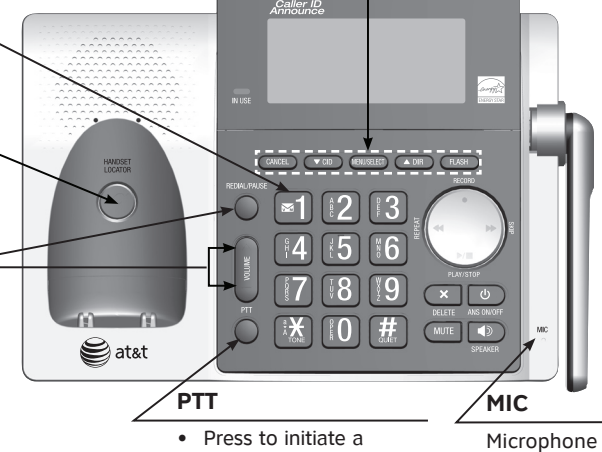
Press to turn the built-in answering system on or off.

#### MUTE

- During a call, press to mute the microphone.
- When the phone is ringing, press to mute the ringer temporarily.

#### /SPEAKER

Press to make or answer a call using the speakerphone.



### Initial settings

**We recommend you program your telephone system before use.** The following are a few examples of common features to set before using the telephone. Refer to the **Handset settings**, **Telephone base settings** and **Answering system settings** in the Abridged user’s manual or the online Complete user’s manual for detailed instructions on setting all telephone features.

#### Set date/time

Set the date/time before using the answering system.

**Using a cordless handset or the telephone base:**

1. **MENU** -> ▼ or ▲ -> **Set date/time** -> **SELECT**.
2. Enter the month, day and year using the dialing keys -> **SELECT**.
3. Enter the hour and minute using the dialing keys.
4. ▼ or ▲ to choose **AM** or **PM** -> **SELECT**.

#### Record your own announcement

Your outgoing announcement plays when calls are answered by the answering system. You can use the preset announcement to answer calls, or replace it with your own recorded announcement.

**Using a cordless handset:**

1. **MENU** -> ▼ or ▲ -> **Answering sys** -> **SELECT**.
2. **SELECT** to select **Announcement**.
3. **SELECT** to select **Record annnc**.
4. Facing the handset, record your announcement and press **5** to end recording.

**Using the telephone base:**

1. •/RECORD -> ▼ or ▲ -> **Announcement** -> **SELECT**.
2. Speak towards the telephone base to record your announcement and press **5** to end recording.

#### Number of rings

You can set the answering system to answer an incoming call after two, three, four, five or six rings, or toll saver. If you choose toll saver, the answering system answers a call after two rings if you have new messages, or after four rings when there are no new messages.

If you want the built-in answering system instead of the voicemail to answer a call, you should set the answering system to answer a call at least two rings before the voicemail is set to answer. Contact your telephone service provider for information on your voicemail settings.

**Using a cordless handset or the telephone base:**

1. **MENU** -> ▼ or ▲ -> **Answering sys** -> **SELECT**.
2. ▼ or ▲ -> **Ans sys setup** -> **SELECT**.
3. ▼ or ▲ -> **# of rings** -> **SELECT**.
4. ▼ or ▲ -> Choose among **2, 3, 4, 5, 6** or **Toll saver** -> **SELECT**.

#### Ringer volume

You can set the ringer volume level to one of the six levels or turn the ringer off.

**Using a cordless handset or the telephone base:**

1. **MENU** -> ▼ or ▲ -> **Ringers** -> **SELECT**.
2. **SELECT** to select **Ringer volume**.
3. ▼ or ▲ to choose the desired level -> **SELECT**.

#### Reset language to English

If you have accidentally changed the screen display language and want to switch it back to English, follow the steps.

- **MENU** in idle mode-> enter **364#**.

Telephone operation

Operation	Steps
Making a call	<b>Using a cordless handset:</b> Press <b>PHONE</b> or <b>/SPEAKER</b> -> Enter the telephone number. <b>Using the telephone base:</b> Press <b>/SPEAKER</b> -> Enter the telephone number.
On-hook dialing (predialing)	<b>Using a cordless handset:</b> Enter the telephone number -> Press <b>PHONE</b> or <b>/SPEAKER</b> to call. <b>Using the telephone base:</b> Enter the telephone number -> Press <b>/SPEAKER</b> to call.
Answering a call	<b>Using a cordless handset:</b> Press <b>PHONE</b> or <b>/SPEAKER</b> , or press any dialing keys ( <b>0-9</b> , <b>TONE ✕</b> or <b>#</b> ). <b>Using the telephone base:</b> Press <b>/SPEAKER</b> , or press any dialing keys ( <b>0-9</b> , <b>TONE ✕</b> or <b>#</b> ).
Ending a call	<b>Using a cordless handset:</b> Press <b>OFF</b> or return the handset to the telephone base or charger. <b>Using the telephone base:</b> Press <b>/SPEAKER</b> .
Handset speakerphone	During a call, press <b>/SPEAKER</b> to switch between handsfree speakerphone and normal handset use.
Redial	<b>Using a cordless handset:</b> Press <b>REDIAL</b> repeatedly to select the desired entry -> <b>PHONE</b> or <b>/SPEAKER</b> to call. <b>Using the telephone base:</b> Press <b>REDIAL</b> repeatedly to select the desired entry -> <b>/SPEAKER</b> to call.
Volume control	Press <b>VOLUME▼</b> to decrease or press <b>VOLUME▲</b> to increase the listening volume during a call.
Call waiting (Requires subscription from telephone service provider)	Press <b>FLASH</b> on the handset or <b>FLASH</b> on the telephone base to put current call on hold and to take the new call; press again to switch back and forth between calls.

Caller ID

This product supports caller ID services offered by most telephone service providers. The telephone stores caller ID information of the last 50 incoming calls in the telephone base. This information is common to all devices.

Missed call indicator
When a handset or the telephone base is in idle mode and has new or missed calls, its screen shows <b>XX Missed calls</b> . You can erase the missed call indicator either by reviewing the call log one by one, or by <u>pressing and holding</u> <b>CANCEL</b> on the handset or <b>CANCEL</b> on the telephone base in idle mode.
Review and dial a number in the call log
1. <b>CID</b> in idle mode -> <b>▼</b> or <b>▲</b> to scroll through the list. 2. <b>PHONE</b> or <b>/SPEAKER</b> on the handset, or <b>/SPEAKER</b> on the telephone base to call when the desired entry is displayed.
Caller ID announce
When this feature is on and you have an incoming call, the handset and/or base speaks “ <i>Call from...</i> ” and the name of the caller based on the directory or caller ID information. You can turn this feature off for the base or each individual handset, or both. 1. <b>MENU</b> -> <b>▼</b> or <b>▲</b> -> <b>Settings</b> -> <b>SELECT</b> . 2. <b>▼</b> or <b>▲</b> -> <b>Caller ID annnc</b> -> <b>SELECT</b> . 3. <b>▼</b> or <b>▲</b> to choose <b>Set all On/Off</b> , <b>Local handset</b> or <b>Base</b> -> <b>SELECT</b> . 4. <b>▼</b> or <b>▲</b> to choose <b>On</b> or <b>Off</b> -> <b>SELECT</b> .

Directory

The directory can store up to 50 entries, which are shared by all system devices.

Operation	Steps
Adding an entry	1. <b>MENU</b> . 2. <b>▼</b> or <b>▲</b> -> <b>Directory</b> -> <b>SELECT</b> . 3. <b>▼</b> or <b>▲</b> -> <b>Add contact</b> -> <b>SELECT</b> . 4. Enter a telephone number up to 30 digits -> <b>SELECT</b> . 5. Enter a name up to 15 characters -> <b>SELECT</b> .
Searching/dialing an entry	1. <b>DIR</b> in idle mode. 2. Press <b>▼</b> or <b>▲</b> to browse through the directory, or press the dialing keys ( <b>0-9</b> ) to start a name search. 3. Press <b>PHONE</b> or <b>/SPEAKER</b> on a handset to call. <b>-OR-</b> Press <b>/SPEAKER</b> on the telephone base to call.

Answering system

About answering system and voicemail
Your telephone has separate indicators for two different types of voice messages: those left on the built-in answering system and those left at your telephone service provider’s voicemail. To listen to messages recorded on the built-in answering system, refer to the <b>Message playback</b> section on the right; to listen to voicemail, contact your telephone service provider for more information.
Turn answering system on/off
The answering system must be turned on to answer and record messages. <b>Using a cordless handset:</b> 1. <b>MENU</b> . 2. <b>▼</b> or <b>▲</b> -> <b>Answering sys</b> -> <b>SELECT</b> . 3. <b>▼</b> or <b>▲</b> -> <b>Answer ON/OFF</b> -> <b>SELECT</b> . 4. <b>▼</b> or <b>▲</b> -> <b>On</b> or <b>Off</b> -> <b>SELECT</b> . When the answering system is on, the handset shows <b>ANS ON</b> . <b>Using the telephone base:</b> Press <b>/ANS ON/OFF</b> to turn the answering system on or off. If the answering system is turned on, it announces, “ <i>Calls will be answered.</i> ” If the answering system is turned off, it announces, “ <i>Calls will not be answered.</i> ”
Message alert tone
When this feature is on, and there is at least one new message, the telephone base beeps every 10 seconds. <b>Using a cordless handset or the telephone base:</b> 1. <b>MENU</b> -> <b>▼</b> or <b>▲</b> -> <b>Answering sys</b> -> <b>SELECT</b> . 2. <b>▼</b> or <b>▲</b> -> <b>Ans sys setup</b> -> <b>SELECT</b> . 3. <b>▼</b> or <b>▲</b> -> <b>Msg alert tone</b> -> <b>SELECT</b> . 4. <b>▼</b> or <b>▲</b> -> <b>On</b> or <b>Off</b> -> <b>SELECT</b> .
Call screening
Use this feature to choose whether incoming messages can be heard over at telephone base when they are being recorded. If you turn call screening on, you hear the incoming message at the telephone base. While monitoring an incoming message, you can answer the call by pressing <b>PHONE</b> on the handset or <b>/SPEAKER</b> on the telephone base. <b>Using a cordless handset or the telephone base:</b> 1. <b>MENU</b> -> <b>▼</b> or <b>▲</b> -> <b>Answering sys</b> -> <b>SELECT</b> . 2. <b>▼</b> or <b>▲</b> -> <b>Ans sys setup</b> -> <b>SELECT</b> . 3. <b>SELECT</b> to select <b>Call screening</b> . 4. <b>▼</b> or <b>▲</b> -> choose <b>On</b> or <b>Off</b> -> <b>SELECT</b> .

Answering system (continued)

Message playback

**Using the telephone base:**  
Press ►/■/PLAY when the telephone base is in idle mode.

**Using a handset:**  
Press MENU twice when the handset is in idle mode.

**Options during playback**

Feature	On the telephone base	On a handset
Adjust playback volume	Press ▼/VOLUME/▲	Press ▼VOLUME or ▲VOLUME
Stop playback	Press ►/■/STOP	Press 5
Skip to the next message	Press ►►/SKIP	Press 6
Repeat the message	Press ◀◀/REPEAT	Press 4
Play the previous message	Press ◀◀/REPEAT twice	Press 4 twice
Delete the message	Press X/DELETE	Press DELETE

For more detailed instructions, please refer to the Abridged user’s manual provided in your package, or for a full set of installation and operation instructions, refer to the online **CL83143 DECT 6.0 cordless telephone/ answering system with caller ID/call waiting** Complete user’s manual at **www.telephones.att.com/manuals**.

For customer service or product information, visit our website at **www.telephones.att.com** or call **1 (800) 222-3111**.  
In Canada, dial **1 (866) 288-4268**.